

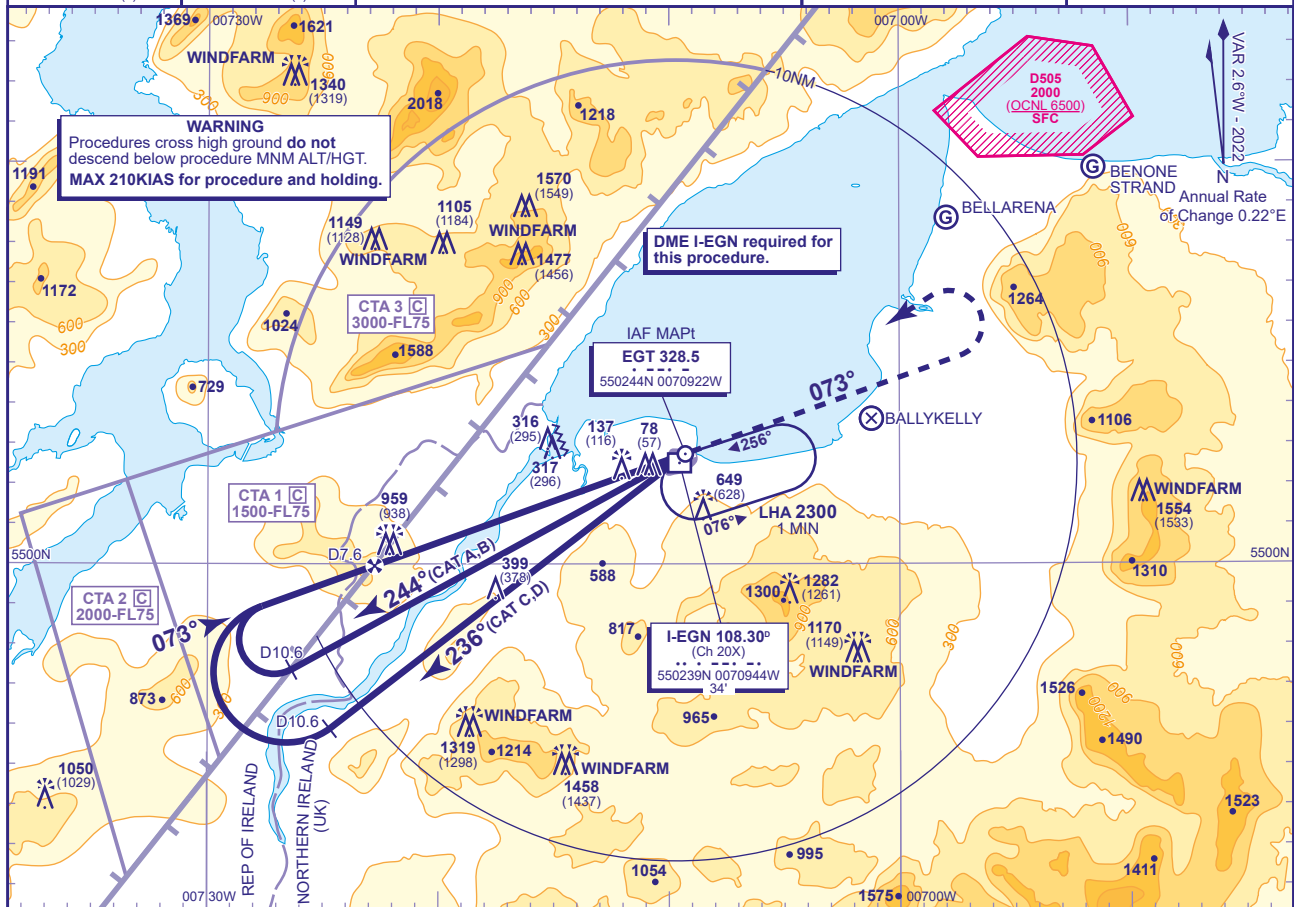


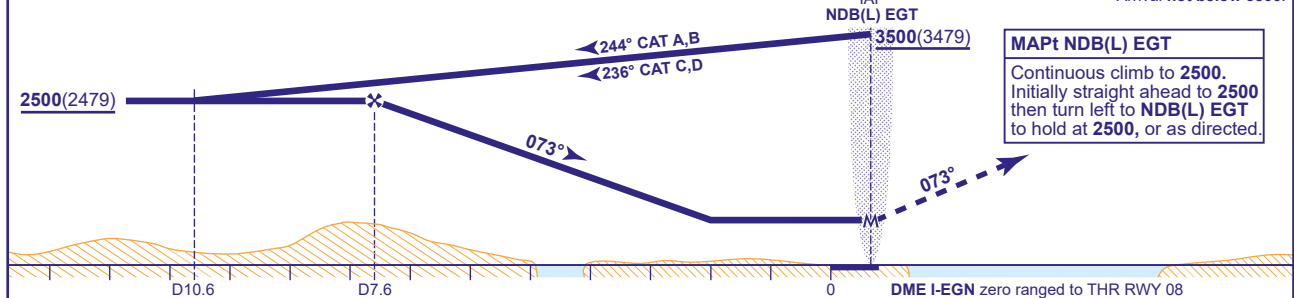
INSTRUMENT APPROACH CHART - ICAO				LONDONDERRY/EGLINTON	
 MSA 25NM NDB(L) EGT	 MSA 7NM NDB(L) EGT	APP 123.625	EGLINTON APPROACH	AD ELEVATION 23	NDB(L)/DME RWY 08 (ACFT CAT A,B,C,D)
		TWR 134.155	EGLINTON TOWER	THR ELEVATION 21	
		ATIS 119.380	EGLINTON INFORMATION	OBSTACLE ELEVATION 1570 AMSL (1549) (ABOVE THR)	
				BEARINGS ARE MAGNETIC	
					TRANSITION ALTITUDE 3000



RECOMMENDED PROFILE Gradient 5.24%, 315FT/NM

DME I-EGN	7	6	5	4	3	2
ALT(HGT)	2310(2289)	1990(1969)	1670(1649)	1350(1329)	1040(1019)	720(699)

Arrival not below 3500.



Aircraft Category		A	B	C	D	Rate of descent	G/S KT	160	140	120	100	80
OCA (OCH)	Procedure	670(649)	670(649)	670(649)	670(649)		FT/MIN	850	750	640	530	420
VM(C)OCA (OCH AAL)	Total Area	950(927)	950(927)	1710(1687)	1710(1687)							
	North of RWY 08/26	420(397)	520(497)	720(697)	730(707)							

NOTES 1 Lowest altitude to commence procedure from hold is 2500.
2 FAT offset 2.7° from RWY CL.
3 DME not usable below 3500 between 140° and 185° due to terrain effects.
4 Aircraft are permitted to enter the Eglinton CTA areas whilst using these procedures and under the control of Eglinton ATC.